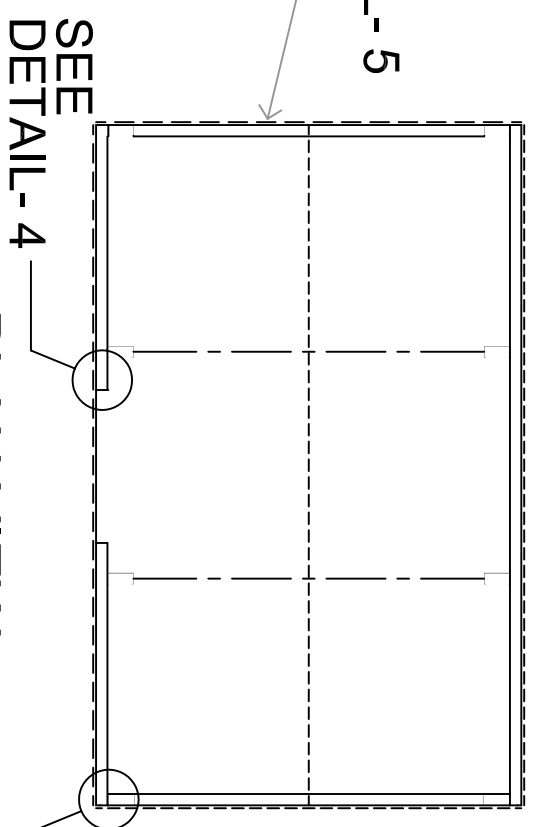
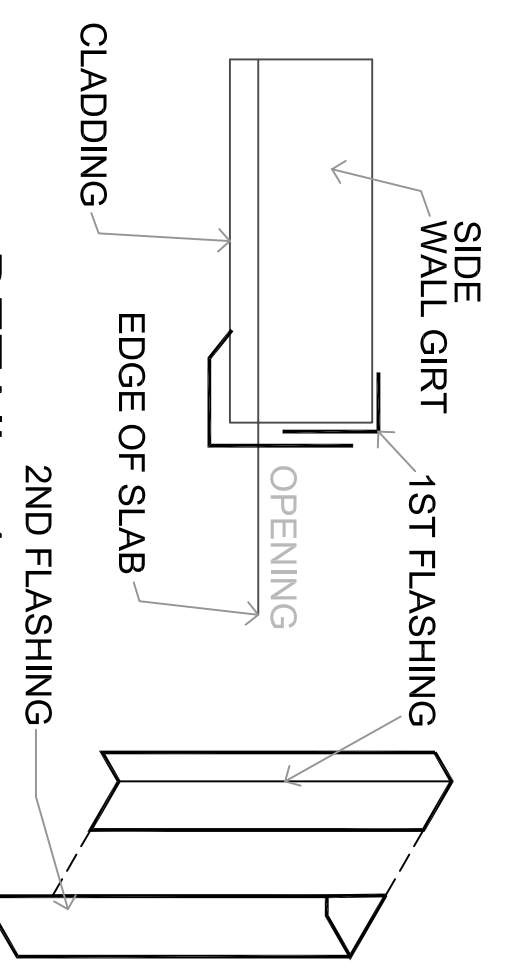


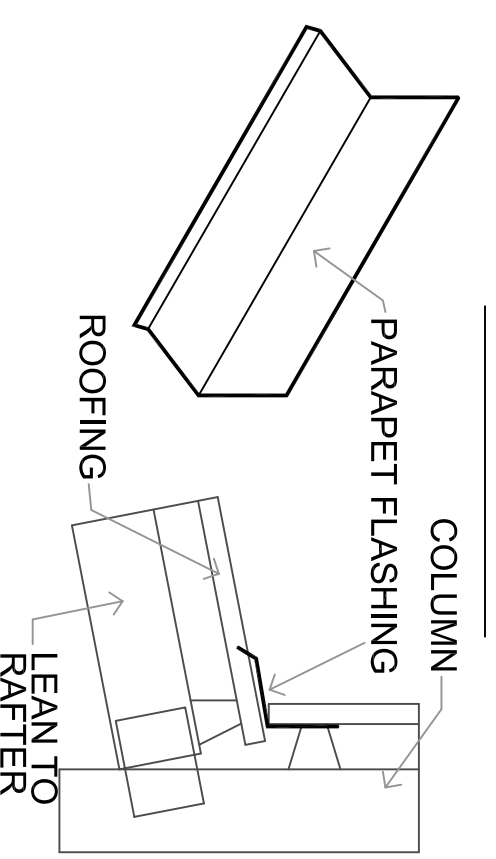
**DETAIL - 5**  
**BARGE CAPPING**



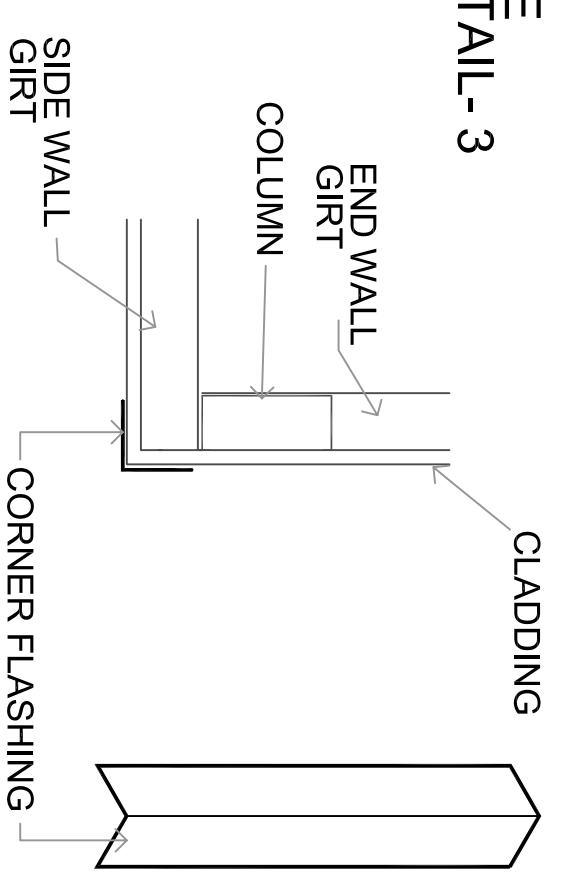
**PLAN VIEW**



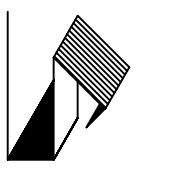
**DETAIL - 4**  
**OPENING FLASHING**



**PARAPET FLASHING DETAIL**



**DETAIL - 3**  
**CORNER FLASHING**



**AG&S BUILDING SYSTEMS** PTY. LTD.  
 PO BOX 252 CAMDEN,  
 NSW AUSTRALIA 2570  
 02 46 550-000 (PH)  
 02 46 555-888 (FAX)

© Copyright AG&S  
 BUILDING SYSTEMS PTY LTD

# FLASHING POSITIONING DETAILS.

**NOTE:**  
 1). PROFILES OF FLASHINGS MAY VARY SLIGHTLY DEPENDING ON SIZE OF BUILDING.  
 2). PARAPET FLASHING DETAIL SHOWN IS FOR AMERICAN BARNS AND LEAN TO'S ONLY.

SCALE  
**NTS**  
 SHEET  
**1 of 1**